

Ole Kortzau

Ole Kortzau

Ole Kortzau is a qualified architect and has worked at some of the leading architect firms in Copenhagen and London. He has had his own studio in Copenhagen since 1973 and has been commissioned to work on major projects in Japan, designed silverware for Georg Jensen, porcelain for Royal Copenhagen, glass for Holmegaard and textiles for Kvadrat.



Kortzau
Flowers 1



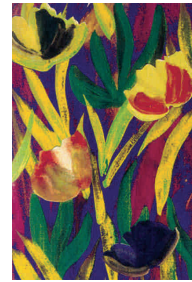
Kortzau
Flowers 2



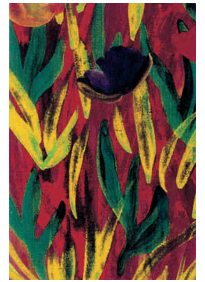
Kortzau
Flowers 3



Kortzau
Flowers 4



Kortzau
Flowers 5



Kortzau
Flowers 6



Kortzau
Flowers 29



Kortzau
Flowers 30



Kortzau
Flowers 33



Kortzau
Flowers 34



Kortzau
Flowers 7



Kortzau
Flowers 8



Kortzau
Flowers 31



Kortzau
Flowers 32